



Kabelkennung: 001

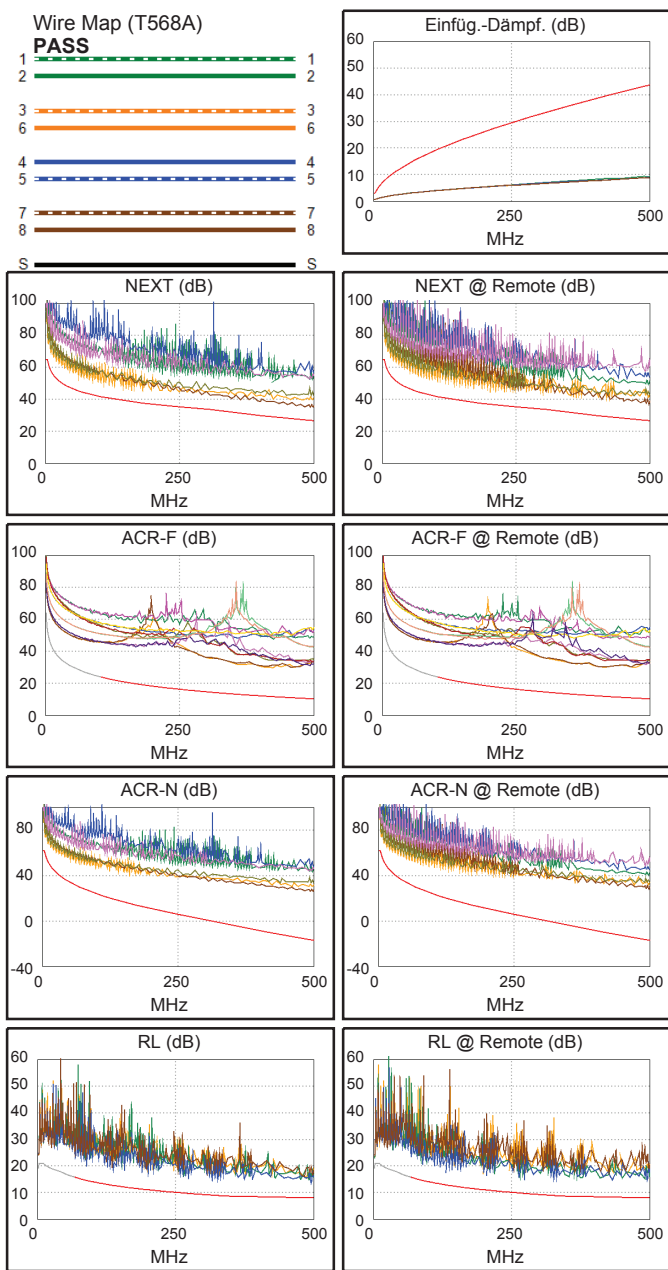
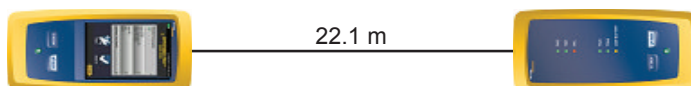
Datum/Uhrzeit: 21.03.2014 13:17:18
Reserve 7.8 dB (NEXT 36-45)
Grenzwert: TIA Cat 6A Perm. Link
 Kabeltyp: R&M S/FTP Cat. 7 Star
 Kalibrierungsdatum: 17.04.2013

Bediener: Daniel Suchowski
 Software-Version: V2.3 Build 2
 Grenzwerte Version: V2.3
 NVP: 76.0%

Testzusammenfassung: PASS

Modell: DSX-5000
 Hauptgerät S/N: 2336095
 Remote S/N: 2336054
 Adapter Hauptgerät: DSX-PLA004
 Adapter Remote: DSX-PLA004

Länge (m), Grnz. 90.0	[Paar 45]	22.1
Laufzeit (ns), Grnz. 498	[Paar 36]	100
Abweichung (ns), Grnz. 44	[Paar 36]	3
Widerstand (Ohm)	[Paar 36]	2.7
Einfüg.-Dämpf. Reserve (dB)	[Paar 36]	34.5
Frequenz (MHz)	[Paar 36]	500.0
Grenzwert (dB)	[Paar 36]	43.8



Min. Abstand Min. Wert

PASS	MAIN	SR	MAIN	SR
Schlechtest Paar	36-45	12-36	36-45	36-45
NEXT (dB)	7.8	9.8	8.2	10.2
Freq. (MHz)	358.0	170.5	493.0	498.0
Grenzwert (dB)	31.5	38.1	26.9	26.7
Schlechtest Paar	36	36	36	36
PS NEXT (dB)	8.0	9.8	9.8	11.2
Freq. (MHz)	301.0	285.0	499.0	498.0
Grenzwert (dB)	31.4	31.8	23.8	23.8

PASS	MAIN	SR	MAIN	SR
Schlechtest Paar	12-36	12-36	12-36	12-36
ACR-F (dB)	17.8	18.2	18.8	18.4
Freq. (MHz)	409.0	414.0	462.0	458.0
Grenzwert (dB)	12.0	11.8	10.9	11.0
Schlechtest Paar	36	36	36	36
PS ACR-F (dB)	18.5	18.6	19.7	19.5
Freq. (MHz)	1.0	1.5	470.0	471.0
Grenzwert (dB)	61.2	57.7	7.7	7.7

N.A.	MAIN	SR	MAIN	SR
Schlechtest Paar	12-36	12-36	36-45	36-45
ACR-N (dB)	15.7	15.7	42.8	45.0
Freq. (MHz)	5.1	5.4	493.0	498.0
Grenzwert (dB)	58.4	58.0	-16.5	-16.9
Schlechtest Paar	36	36	36	36
PS ACR-N (dB)	15.8	16.1	44.3	45.6
Freq. (MHz)	5.1	5.4	499.0	498.0
Grenzwert (dB)	56.1	55.7	-19.9	-19.8

PASS	MAIN	SR	MAIN	SR
Schlechtest Paar	45	45	45	36
RL (dB)	5.5	6.2	5.5	6.4
Freq. (MHz)	495.0	273.0	495.0	476.0
Grenzwert (dB)	8.0	9.6	8.0	8.0

Erfüllte Network Standards:

10BASE-T	100BASE-TX	100BASE-T4
1000BASE-T	10GBASE-T	ATM-25
ATM-51	ATM-155	100VG-AnyLan
TR-4	TR-16 Active	TR-16 Passive